

SAFEKEEPER PLUS!

FORENSIC EVIDENCE DRYING CABINET

THE WORLD'S SAFEST DRYING CABINET

Exceeds OSHA, ANSI and all relevant international standards

SPECIAL FEATURES

- The **ONLY** cabinet with '5-STAGE' Filtration that totally eliminates odors & bacterial pathogens using HEPA & Dust free Carbon filters.
- The **ONLY** cabinet that constantly monitors and displays 'real time' face velocity of airflow with a variable speed blower - not a two-speed fan that just displays 0-100% fan speed like our competitors use!
- The **ONLY** cabinet that allows each chamber on 'Duplex' cabinets to be run independent of each other with two complete control systems. Our competitor's cabinets require that both run together, even if one side empty, which increases operational costs and filter usage!
- The **ONLY** cabinet with an 'inter-filter' test port which allows for manual testing of filter performance in addition to our electronic alarms.



Toll Free/ 800.306.0656 F/ 800.306.0677

WWW.AIR-SCIENCE.COM



AIR SCIENCE USA

Air Science USA LLC. are leaders in filtration and contamination control equipment and have a range of cabinets designed specifically for forensic applications. Whether you need to protect the operator or the evidence we have a range of cabinets to suit your needs.

A drying cabinet for the storage of evidence



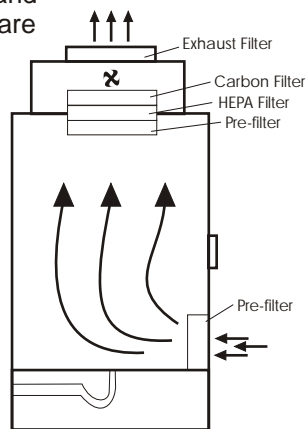
SAFEKEEPER (3ft cabinet shown)

Available in 2.5, 3, 4, 5, & 6 foot widths, including Duplex versions.

WORKING PRINCIPLES OF '5-STAGE' FILTRATION

Air coming into the cabinet is first passed through an in-let pre-filter to ensure it is clean. Vapors, odors and particulates given off while drying are filtered by both special 'dust free' carbon and HEPA filters. These main filters are protected by a filterrete pre-filter. A safety exhaust filter is added to comply with US Lab Ventilation Standard Z9.5. Nobody offers more protection!

High quality fans maintain a constant airflow, even when the pre-filters are partly blocked or if doors are opened. If the air velocity reduces to the extent that performance is adversely affected, a low airflow alarm is activated.



Air Flow Pattern

INTRODUCTION

The **Forensic Evidence Cabinet** is a containment cabinet for the drying and storing of forensic evidence. The airflow through the cabinet gives a constant drying medium for items of evidence large or small, and contains any fumes, odors or particulates given off while drying, thus ensuring a safe working environment for personnel.

FEATURES

- Eliminates putrid odors and chemical fumes using carbon filtration
- Dries various items of evidence in a controlled environment
- High protection of personnel from airborne hazards and bacterial pathogens thru HEPA filtration
- Protection of evidence from cross contamination
- Low airflow alarm detects pre-filter blockage
- Compliance with OSHA/ANSI regulations
- Simple to install
- Easily cleaned to prevent cross contamination
- Lockable with tamper-proof seals for security
- Safety back-up filters available ANSI Z9.5 compliant when fitted

CONSTRUCTION

Corrosion proof design increases operational life, with the use of thermally fused one piece seamless polypropylene construction.

The cabinet can be easily cleaned down after use by rinsing with a spray hose incorporated in the cabinet and washing with detergent and water. The space inside the cabinet can be used to provide full length hanging space and removable shelves for storage of smaller items.

BENCH TOP VERSION

Our **Bench Top** mounted 'mini-keeper' design is ideal when floor space is limited.



. . . . DUPLEX VERSION

The **Duplex** style units are available in addition to

our single large compartment design. Duplex units offer a solid wall between compartments and allows two cases to share a unit while preventing any chance of cross contamination. Unlike competitive products, each compartment is fitted with it's own controller, allowing them to be run independent of each other. Thus, operational costs are greatly reduced.

SAFE AND EASY TO CHANGE FILTERS

Saturated and dirty pre-filters are changed from within the cabinet while unit is running to prevent operator contamination. The patented filter clamping mechanism allows the main filter to slide directly into a bag. A new filter can be installed without a high overhead reach and an even seal at filter face at all times prevents bypass leakage. A special key is provided for security access and to prevent an operator from unknowingly opening this compartment and exposing themselves to potential health hazards.



. . . . PRE-FILTERS

Air in-take area has a no-metal design and allows filter to be changed without tools. As an added feature, all prefilters on the cabinet are of the same size and shape minimizing spare parts needed to stock and simplifying installation.



SHELVES

Each cabinet contains three perforated polypropylene shelves that can easily be removed with one hand without tools.

HANGING ROD

Each cabinet contains a removable hanging rod for drying items. A start up kit is recommended for the added convenience of hangers, paper lining, tamper proof seals, etc.

WASTE PUMP

An electric waste pump is standard on all cabinets. It allows for 'free-flow' draining when not in use or as a 'booster' for pumping water to remotely located drains. In addition, a waste collection container is provided for storing waste when drains are not available. The waste drain in each compartment is fitted with a strainer for catching large particulate mater and an "anti-siphon" trap to prevent hazardous back flow of gases is also provided.

filtration
and
contamination
control
equipment

WASH DOWN HOSE

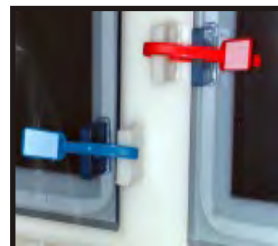
Each cabinet includes a wash down hose that makes cleaning the cabinet easy. The spray hose is kept outside the working compartment all times to prevent the chance of contamination leaving the cabinet.

However, this hose is mounted to the side of the cabinet when not in use and can remain connect to the water supply, thus eliminating a 'trip hazard' or bending motion to the ground the operator must perform with competitive cabinets when using their hose..



TAMPER PROOF SEALS

Front door is key locked with additional tamper proof seal housing that will accommodate I.D. tags or a pad lock for extra security.



ADVANCED MICROPROCESSOR CONTROLLER

The microprocessor automatic safety controller ensures your protection 24 hours a day and features a large LCD display with audio and visual alarms. It incorporates precise airflow control and monitoring (actual face velocity of air entering the cabinet), 'real time' filter gas detection and monitoring of all filters, timing of evidence drying, filter lock out, self-diagnostic of all safety parameters, and periodic reminder of safety checks.



OPTIONAL WHEELS

Units come standard with leveling feet. For situations that require mobility, optional lockable non-marking castors are available.



START UP KIT OPTION

The start up kit provides you with everything you need to safely operate and maintain your forensic evidence drying cabinet. The start up kit includes hangers, sponges, protective goggles, latex gloves, disinfectant spray, respirator, paper lining for collecting trace, tamper proof seals, set of pre-filters, and biohazard safety labels for waste.



PART OF AIR SCIENCE USA'S COMMITMENT TO
PROTECTING PEOPLE AND THE ENVIRONMENT.

Air Science USA has always been at the forefront of contamination, chemical hazards and pollution control. We are leaders in High Efficiency Particulate Air (HEPA) filters and Activated Carbon Filtration for the containment of hazardous substances thus protecting both the environment and the operator. Utilizing advanced filtration techniques, Air Science USA products not only achieve but generally surpass legal requirements.

<i>SPECIFICATIONS</i>	<i>3ft</i>	<i>4ft</i>	<i>5ft</i>	<i>6ft</i>	<i>Benchtop</i>	<i>4, 5, 6ft Duplex units also available</i>
Dim. inches (w x d x h)	36 x 28 x 83	48 x 28 x 83	60 x 28 x 83	72 x 28 x 83	30 x 28 x 48	

ALL UNITS

Air Changes per hour	>150
----------------------	------

CONSTRUCTION

Main Structure	White polypropylene
Doors	Lexan, key locked for security with fittings for tamper proof seal
Plumbing	PVC water supply and flexible spray hoze
Fan	Centrifugal for high velocity low noise, sparkless and brushless
Drain	Central 1.5" waste outlet
Storage	Hanging rail and removable shelves

ELECTRICAL

Supply Requirements	110v 60 Hz (other voltages available upon request)
---------------------	--

FILTERS (5 STAGE)

Filter Door	Pre-filter
Filters-Main	Pre-filter, HEPA filter, and dust free carbon filter
Filter Exhaust	HEPA or Carbon (complies with ANSI Z9.5 when fitted)

For advice on filter selection call Air Science USA
800.306.0656 or info@Air-Science.com

Distributed and fully supported by:

